



BEAUFORT GREEN

Bovingdon Road, SW6

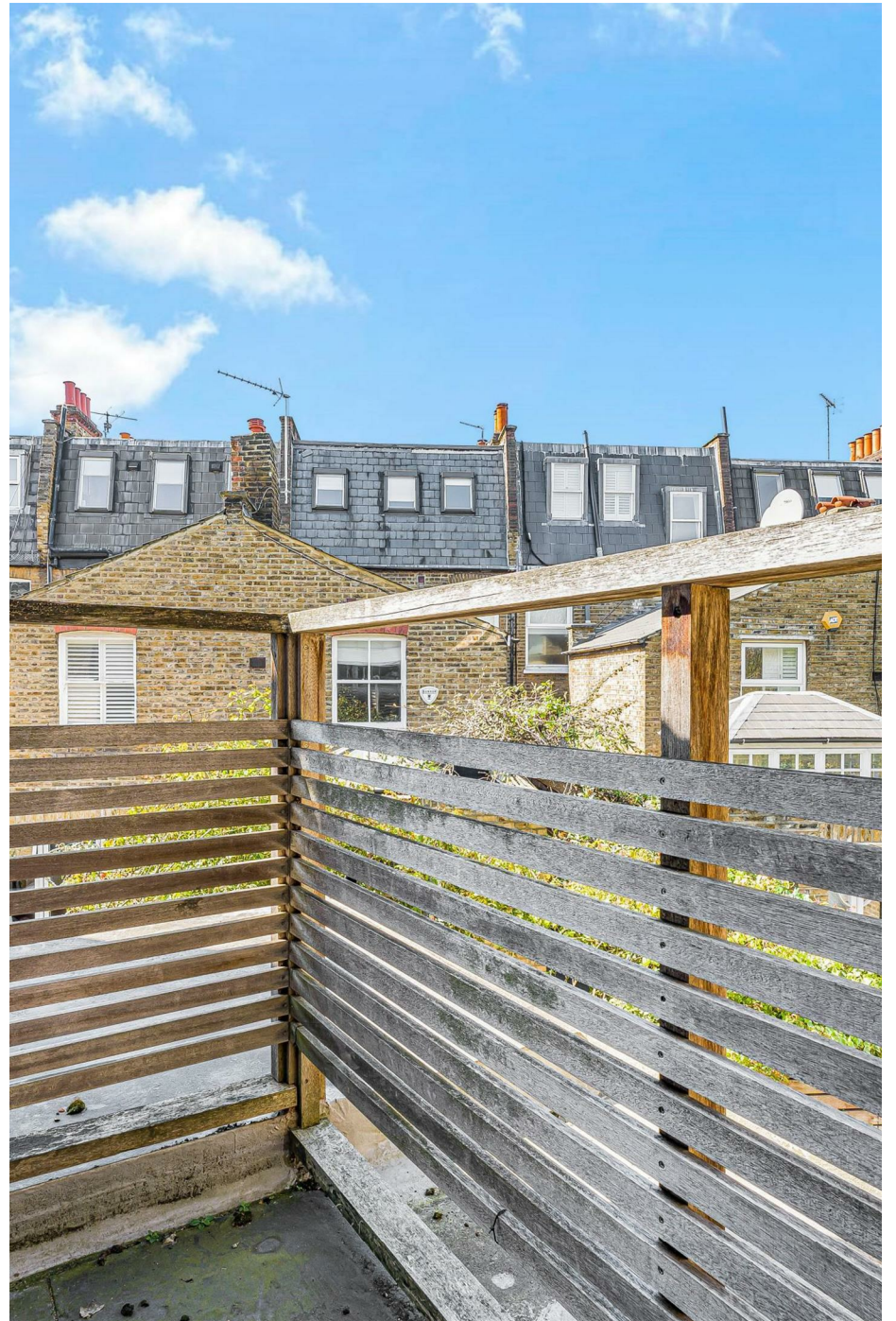
£695,000



Set on the first floor of a charming period conversion, this bright and well-proportioned two-bedroom apartment offers a spacious reception room with high ceilings and excellent natural light. A separate kitchen provides good storage and potential to reconfigure into open-plan living, while both bedrooms are generously sized, with the principal benefiting from access to a private balcony.

Further benefits include two bathrooms, a second balcony off the reception room, and an excellent Fulham location close to Fulham Broadway and Parsons Green.





BEAUFORT GREEN

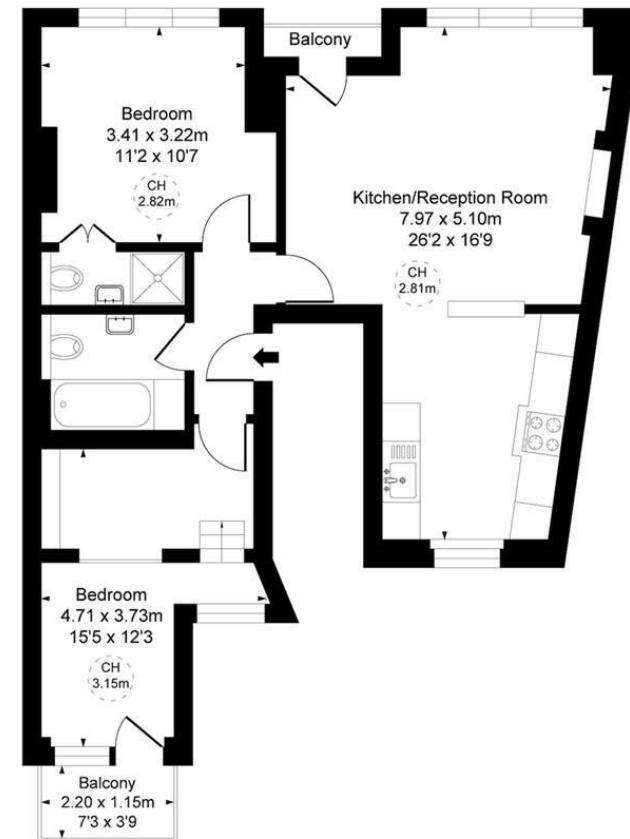


BEAUFORT GREEN

At a Glance.

- Two bedrooms
- Two bathrooms
- Separate kitchen
- First floor period conversion
- High ceilings and good natural light
- Prime Fulham location near transport links

Bovingdon Road, SW6
Approximate Gross Internal Area
68.92 sq m / 742 sq ft
(CH = Ceiling Heights)



First Floor

This plan is not to scale. It is for guidance and not for valuation purposes.
All measurements and areas are approximate only, and have been prepared in accordance with the current edition of the RICS Code of Measuring Practice.

BEAUFORT GREEN

02074594100

charlie@beaufortgreen.co.uk

263 New Kings Road
London
SW16 1DB